

NAVIWORLD ASSET MAINTENANCE MANAGEMENT

MICROSOFT DYNAMICS™ NAV

NAVIWORLD ASSET MAINTENANCE MANAGEMENT ADD-ON FOR DYNAMICS-NAV - HIGHLIGHTS:

FACILITATE CONTROL OF THE MAINTENANCE ACTIVITIES:

- To the entire Assets, which is easier to comprehend and manage
- To generate simple day-to-day Maintenance requests with the help of service request
- Fast access to information
- Complex features like predicting the future performance of the Assets
- Integrating measuring tools and facilitating the predictions (Machine to Machine Interfaces)

MAKE MANAGEMENT INFORMATION EASIER TO COMPREHEND INCLUDING:

- Maintenance Order Management
- Cost of spare parts
- Rough information concerning Maintenance Personnel (Maintenance centers) load
- Cost due to Maintenance Activities

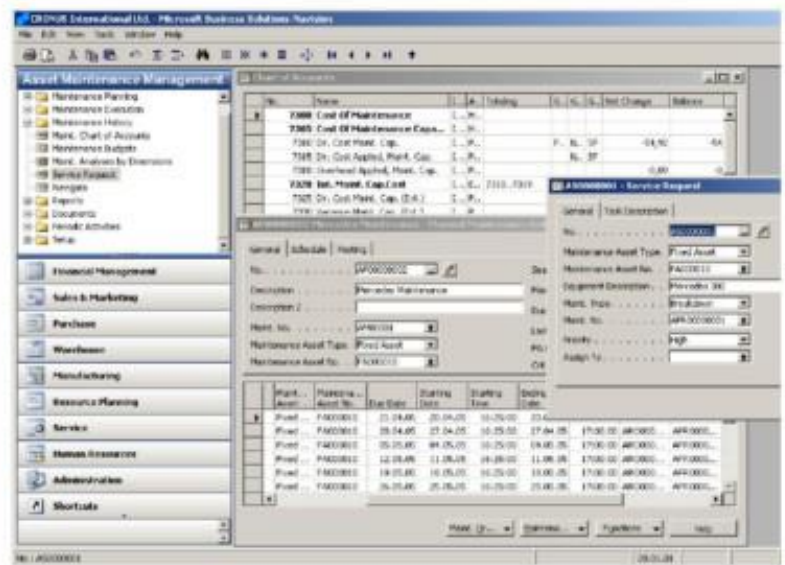
INTEGRATE ASSET MAINTENANCE MANAGEMENT WITH OTHER STANDARD DYNAMICS NAV MODULES:

- General Ledger
- Fixed Assets
- Manufacturing
- Inventory
- Purchase and Payables

NAVIWORLD ASSET MAINTENANCE MANAGEMENT ADD-ON FOR DYNAMICS NAV

Asset Maintenance Management Add-On for Dynamics NAV will help you minimize downtime, manage your resources effectively, maximize profitability and secure the highest performance of your assets. It is providing you with rich functionality and plans for all kinds of preventive and predictive schedules.

Asset Maintenance Management is totally integrated with other related modules like General Ledger, Inventory, Fixed Assets, Capital Requirement Planning and Purchase and Payables.



ASSET MAINTENANCE MANAGEMENT SETUP

- Asset Management Setup
- Time, shifts, locations, groupings and calendars

PRODUCT FEATURES:

AMM - Basic

- Maintenance Card
- Maintenance Work Orders
- Spare parts Management
- Consumption
- Main. BOM
- Maintenance Routing
- GL Integration
- Maintenance Costing
- Budget
- Preventive Maintenance

AMM - Planning

- Advanced Maintenance Requirement Planning
- Maintenance Work Centers
- Maintenance Calendar
- Service Requests

AMM - Plant

- Auto. Demands for Maintenance Into Manufacturing Centers

AMM - Alternative Spare Parts

- Working with alternative spare parts through out the Maintenance operations

AMM - Advanced

- Predictive and Critical Maintenance
- Maintenance Budget
- Subcontracting
- WIFI/Device/Machine Integration
- Document Center (ISO, Safety, Regulations)
- Handhelds

RECORDING SERVICE REQUESTS AND SETTING UP A MAINTENANCE CARD

Different cards for the Maintenance types available can be set up, to record the parameters according to type, to plan the spare parts and Maintenance routes and use this information for scheduling Maintenance orders.

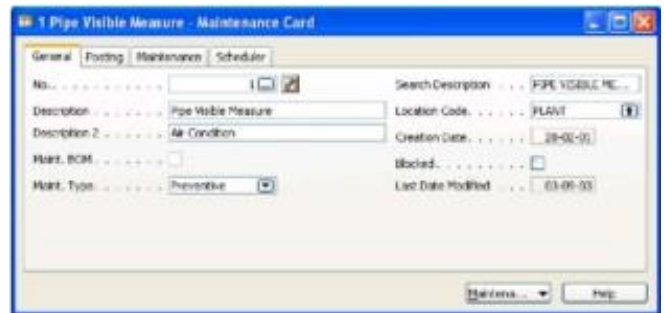
The Maintenance Card:

- The Maintenance card defines the Maintenance activity and acts as a Maintenance order reference template
- The Maintenance card is the central instance for executing any Maintenance activity
- The Maintenance card indicates Maintenance type - preventive, breakdown, general, safety, callout, shutdown and predictive. Basic information is entered related to the tasks, locations, etc.
- The spares required for the execution of the Maintenance activity are assigned on

Maintenance card as so called Maintenance

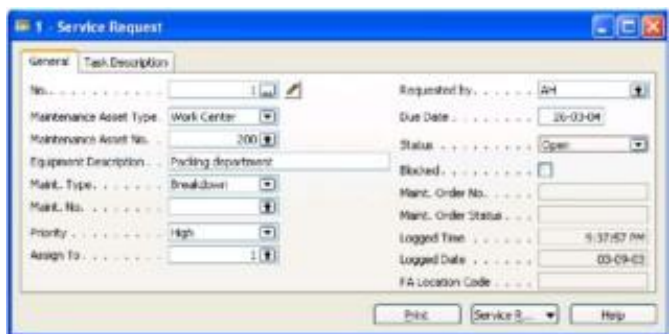
spare parts

- The individual work-steps needed to complete the Maintenance tasks are assigned on the Maintenance card as Maintenance routes
- Grouping the Maintenance activities to simplify assigning the tasks and preparing an analysis



The Service Request:

- Used to notify the malfunctions and other exceptional circumstances that require prompt and earlier action
- Documenting the functional location and the affected piece of equipment and assets by notifying through a service request
- Orders from service requests for immediate actions

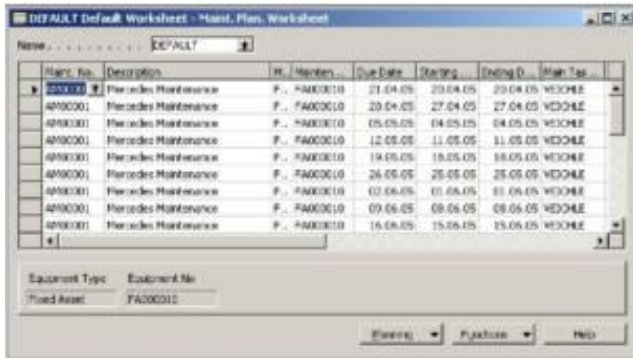


SPARE PARTS MANAGEMENT

- Manage the entire spare part stock
- Multiple locations, Unit Of Measures and various spare part types
- Spare part stock parameters and automatic reordering

MAINTENANCE SCHEDULER AND MAINTENANCE PLANNING WORKSHEETS

Planning preventive Maintenance for different equipment is based on the scheduler and repair worksheets.



Maint. No.	Description	M. Method	Due Date	Starting	Ending D.	Main Task
4000001	Periodic Maintenance	F.	21.04.05	20.04.05	20.04.05	VECHOLE
4000001	Periodic Maintenance	F.	20.04.05	27.04.05	27.04.05	VECHOLE
4000001	Periodic Maintenance	F.	05.05.05	04.05.05	04.05.05	VECHOLE
4000001	Periodic Maintenance	F.	12.05.05	11.05.05	11.05.05	VECHOLE
4000001	Periodic Maintenance	F.	19.05.05	18.05.05	18.05.05	VECHOLE
4000001	Periodic Maintenance	F.	26.05.05	25.05.05	25.05.05	VECHOLE
4000001	Periodic Maintenance	F.	02.06.05	01.06.05	01.06.05	VECHOLE
4000001	Periodic Maintenance	F.	09.06.05	08.06.05	08.06.05	VECHOLE
4000001	Periodic Maintenance	F.	16.06.05	15.06.05	15.06.05	VECHOLE

Since applying preventive Maintenance to all equipment is uneconomical, only required equipment linked to appropriate cards with probable service dates in the scheduler lines will be serviced or repaired.

- Scheduler used as a planning tool and to enter preventive and predictive Maintenance data
- Frequency and duration of occurrences for preventive and predictive Maintenance is specified here
- Maintenance planning worksheets generate preventive and predictive Maintenance orders and determine which activities are due for the period selected
- The suggested Maintenance planning worksheet lines are converted to any type of available Maintenance orders and suggestions are made for spare parts procurements

POST CONSUMED SPARES AND UTILIZED TIME FOR MAINTENANCE IN SEPARATE JOURNALS

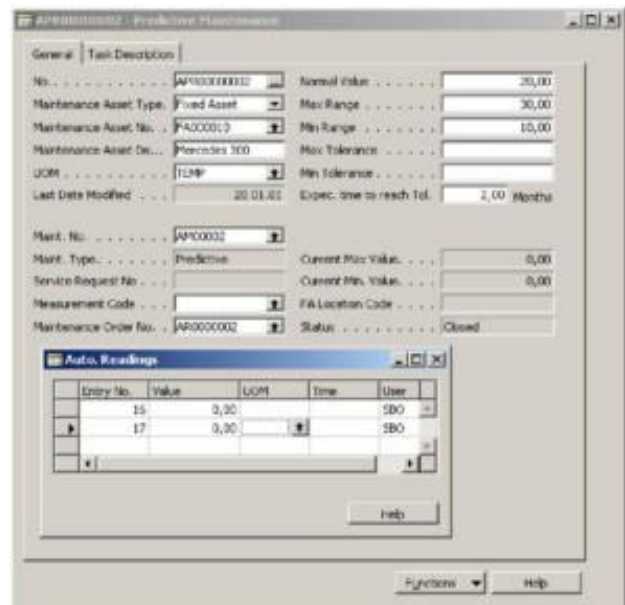
Spares that are consumed for any Maintenance order in the spare parts journals are being recorded. Automatic quantity adjustments in the inventory and cost updates in the appropriate ledgers are made.

The actual operations that are performed for a particular Maintenance job through any Maintenance order is posted through Maintenance journals, updating the G\L and relevant ledgers.

MAINTENANCE ORDERS

A Maintenance order contains information about equipment type and No., date scheduled, status, required spares etc. Orders constitute the central part of all Maintenance jobs.

- Authorizes and directs a personnel, shop or department to do a certain job
- The execution of the Maintenance task is initiated and controlled by Maintenance orders
- Uses the Maintenance routes as the basis for scheduling
- Allocated costs and actual costs for executing a Maintenance activity
- Suggests the starting and ending date and times, individual operational steps and the amount of spares required and their due dates



COSTING, BUDGET PLANNING AND ANALYSIS

The Maintenance accounts can be seen on the Maintenance chart of accounts with Maintenance budgets and analysis by advanced dimensions.

Maintenance Costing

- Estimated and actual cost for each Maintenance job
- Cost by labor, subcontractor, overheads and spare parts
- Integrates with GL Maintenance accounts
- Provide actual Maintenance cost information directly on the fixed asset

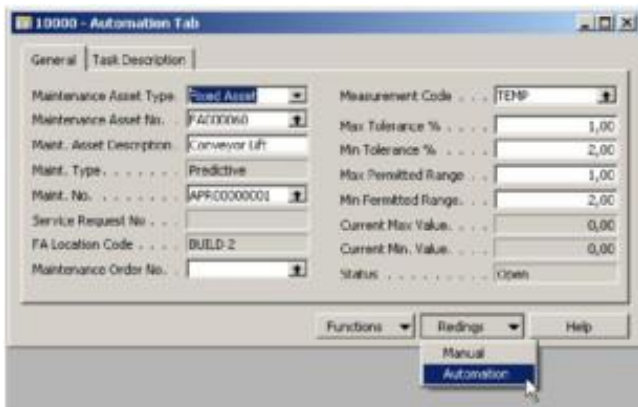
Maintenance Budgets

- View Maintenance chart of accounts
- Plan your Maintenance budgets
- Analyze the budgets with various parameters

MAINTENANCE WORK CENTER

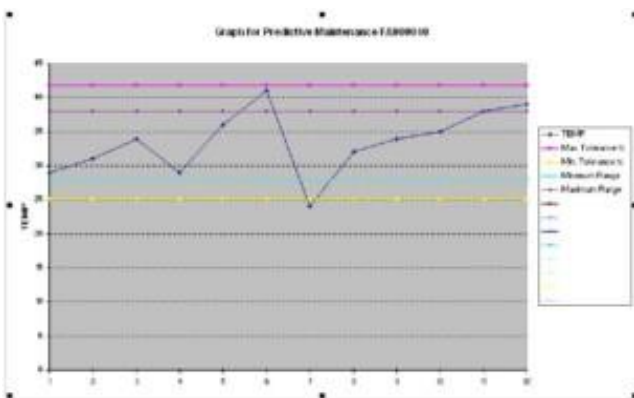
- Manage the capacity of the entire Maintenance
- Specify a machine or a person as a capacity
- Define the cost of a capacity
- Provides load, task and job scheduling

PREDICTIVE AND ALERT MAINTENANCE



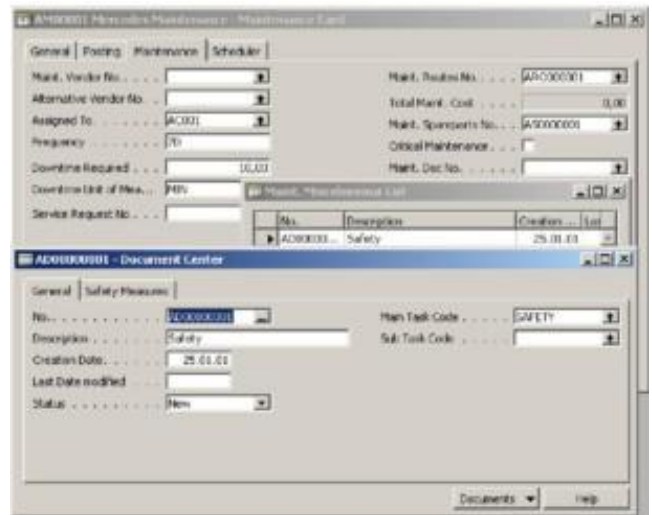
The down time of highly productive machines can be reduced by predicting the machines performance for the future and taking necessary actions on the machine to function properly for efficient production.

It predicts and alerts the respective people for further actions to be taken as shown in the figure.



DOCUMENT CENTER

All the necessary Maintenance documents stored anywhere in the network, can be connected to the Asset Maintenance Management Module. Additionally such documents can be connected to the Maintenance work orders which are released to the shop floor to provide the Artisans with complete and accurate information.



- Measurement and quality inspections of Maintenance
- Various documents related to Maintenance (ISO, safety, instructions, manuals etc.)

The user can actually select the documents to be printed at the time the work orders are printed.

MAINTENANCE SUBCONTRACTS

Any Maintenance activity can be outsourced to the specified vendors by specifying which vendor the Maintenance activity belongs also you can specify the subcontracts partially by setting up the vendor numbers on Maintenance routes and spares.

- Outsource the whole Maintenance activity
- Outsource only a part of the Maintenance activity
- Choose whether the spares are supplied by the vendor or in-house

ADVANCED ASSET MANAGEMENT

- Maintenance planners can predict the performance of the machines with predictive Maintenance and increase the production with maximum efficiency
- Artisans can connect the measuring tools to the asset management so that it has machine-to-machine interface and give you the complete information of the performance of the machine and the necessary steps can be taken depending upon the results obtained

- Any Maintenance related documents (like ISO, safety, regulations, specifications, etc.) can be linked to Asset Management using document management and can be printed automatically by selecting only the necessary documents at the time of releasing the Maintenance orders
- Ease for the managers to check the pending critical Maintenances and take necessary actions
- Online access to information's from any smart phone or PDA

IMPLEMENT WITH MINIMUM TIME AND EFFORT

Since Asset Maintenance Management is already fully integrated with Dynamics-NAV, it is extremely fast to implement. You will not need to spend time and money on integrating it with an accounting and business management solution. The user interface is also the same as the highly acclaimed graphical user interface of Dynamics NAV, so users will soon be up to speed across the whole organization.

MEET TODAY'S AND TOMORROW'S REQUIREMENTS

With facilities to control all aspects of your asset Maintenance management, this solution gives you all the support you need to meet national and international standards of Asset Maintenance Management.

SYSTEM REQUIREMENTS

Asset Maintenance Management requires access to a Dynamics NAV database.

NAVIWORLD (THAILAND) CO., LTD

Bangkok Office: CRC TOWER All Season
Place 87/2 Wireless Road, 36th Floor, Lumpini
Pathumwan, Bangkok 10330, Thailand.
Tel: +66-2-6253125; Fax: +66-2-6253000

Sriracha Office: 127/21 Sukhumvit Road, Sriracha
20110, Chonburi, Thailand
Tel:+66-38-327138; Fax:+66-38-327139

Email: info@naviworld-asia.com
www.naviworld-asia.com